

Example: Screw press



Screw press

Year of construction 2007

Rated press force 8 MN

Hard on hard blow force 18 MN

Gross energy 90kJ

Feuerbacher tensioning key 55.500 SB

Height 55 mm, width 93 mm, length 500 mm

Externally mounted cup spring washers

Fully supported vertical contact face

Supporting clamping screw

Thread M22

Angles 5°/15°

Details of application

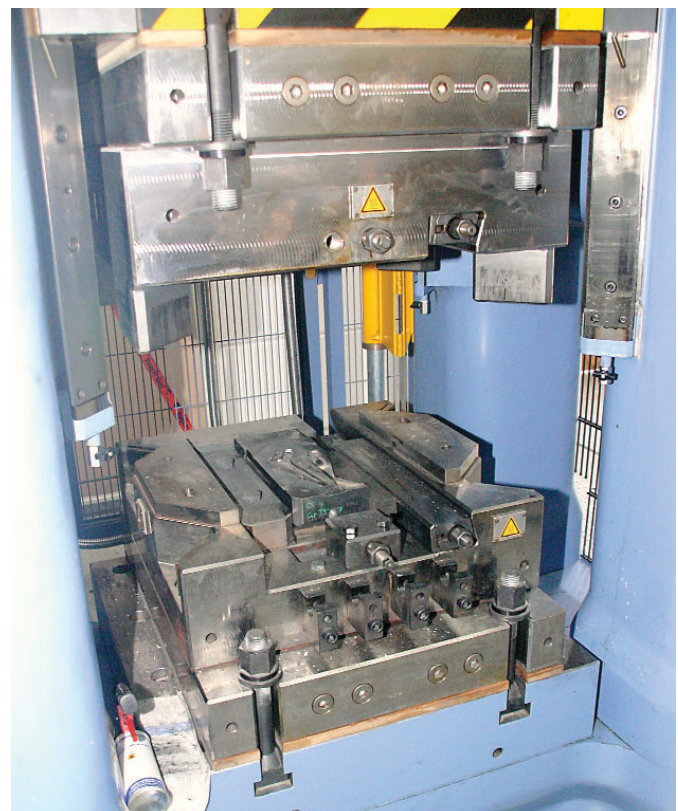
Die holder is designed for use with a single piece die insert (max width 400 mm, length 500 mm, height 60 mm).

The upper and lower die holders are fixed to the press ram and press bed using fixing bolts. The holder is fitted with a heating system, a guide arrangement and additional impact faces.

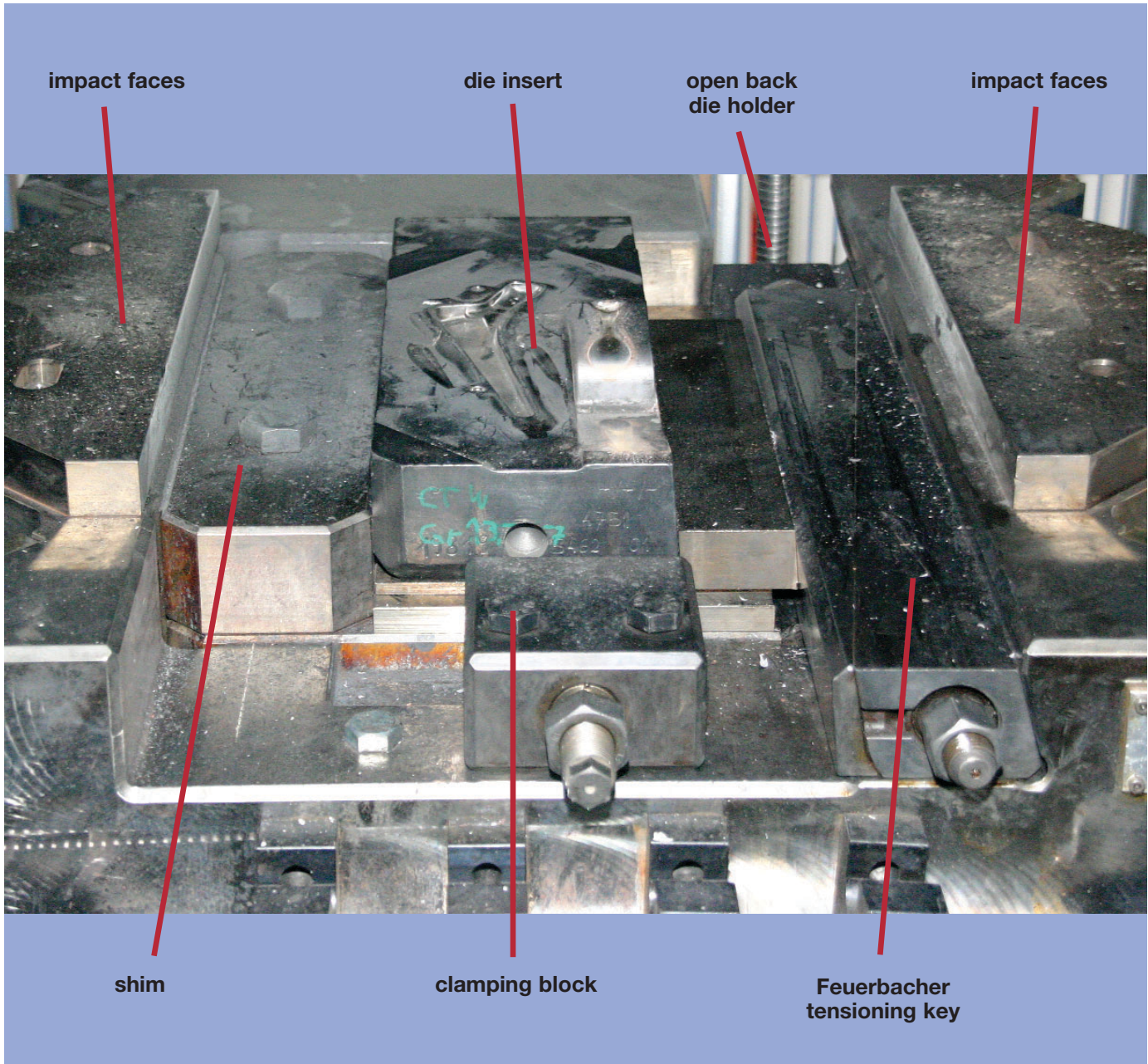
The die inserts are clamped to the die holders at the top and at the bottom using, in each case, one Feuerbacher tensioning key. For changeovers **only the inserts are replaced**. The die holders remain in the press.

Any offset of the dies can be corrected using shims at the clamping faces of the inserts.

Systems of this kind have been provided for presses with force ratings up to 6000 tons.



Example – A special set up



Mechanical and hydraulic presses

Feuerbacher tensioning keys can also be used in conjunction with holders of similar design used on mechanical or hydraulic presses.